

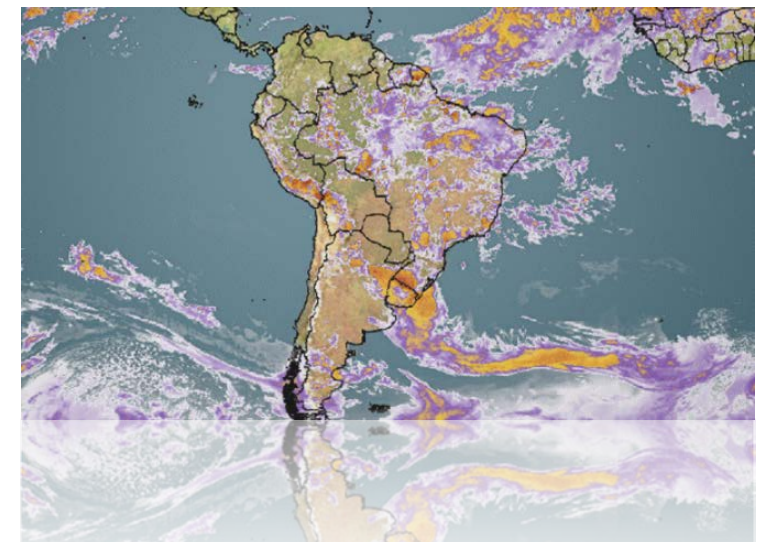


Better Decisions for Your Business
Drive your company forward with ultra-precise weather forecasts



Problem: Inaccurate Forecasts, Especially over Mountainous Regions

- Which weather data are you using?
- What about the spatial and temporal resolution of your forecasts?
- How accurate are they?



✘ **Conventional forecasts are in many cases not sufficiently precise for important decisions!**

Solution by a Team of Internationally Leading Experts

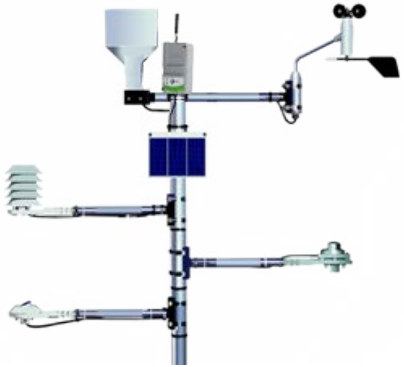


International expertise:

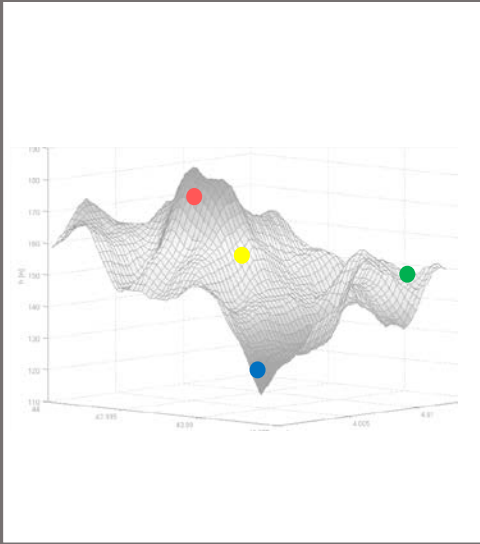
- 💡 Meteorology
- 💡 Geoinformatics
- 💡 Snow science
- 💡 Software development

Development & Verification of the MetGIS Algorithm

Meteorological observation data

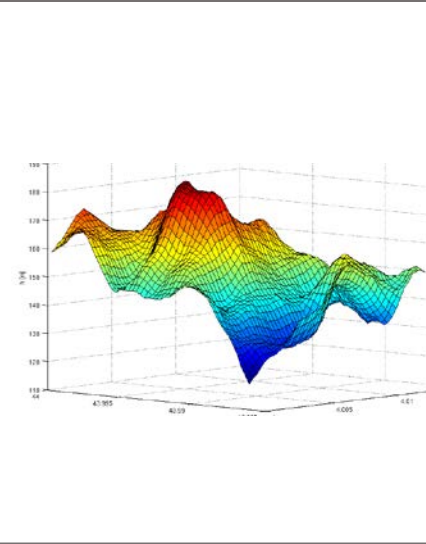


Conventional forecast systems



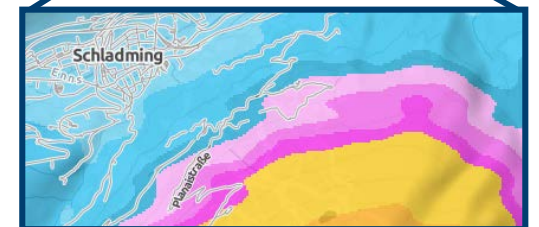
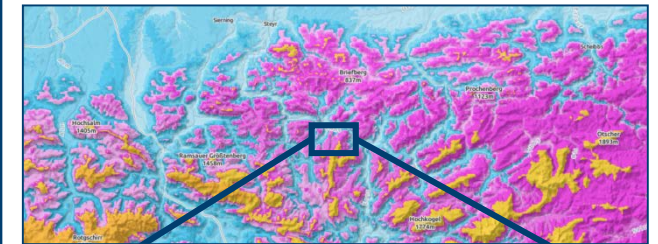
Limit of conventional forecasts

High resolution terrain data



MetGIS[®]
ProfessionalWeatherService

Ultra-precise
weather forecasts
(resolution of up to 30 m)



MetGIS Highlights



**Ultra-precise forecasts
(resolution of up to 30 m)**

Much higher accuracy than
conventional forecasts!



**Available worldwide
in highest quality**

Ideal for international projects
and remote areas!



**Designed and optimized for
mountainous regions**

Thanks to extremely detailed
geographic data!

Industry Focus



Websites, apps & info screens



Winter tourism & ski regions



Avalanche warning services



Road operators, railway & logistics



Civil protection & disaster control



Expedition teams & organizers



Open-pit mining



Agriculture & smart farming



Energy (solar, wind, hydro)

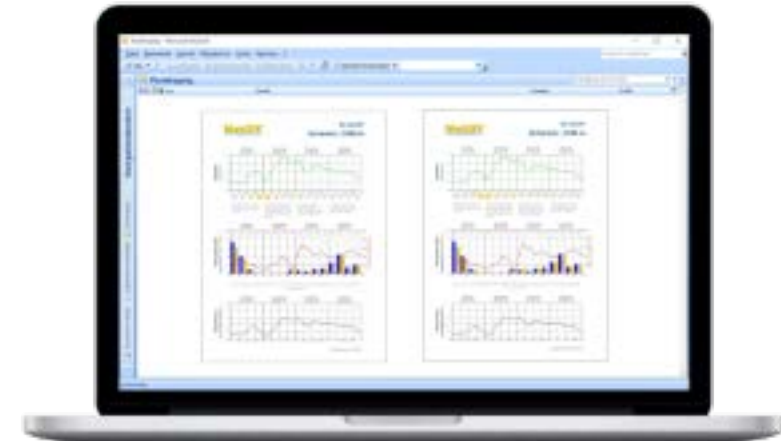
Overview: Products & Services



Point API for professional demands



Weather layers for Google Maps & co



Individual weather reports via PDF



Interactive forecast maps



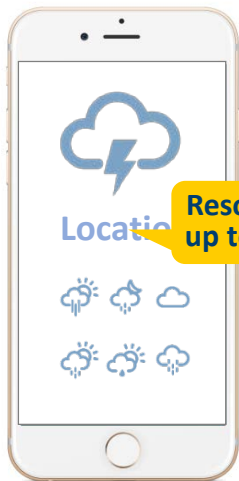
Historic weather data



Consulting & expert opinion

Point-based Weather API for Websites, Apps and Business Applications

- + Calculated on the basis of exact coordinates (not on geo tags etc.)
- + Highest data quality, even in the most remote regions worldwide
- + Easy to implement (JSON)



Resolution:
up to 30 m!

```
Info: {
  Description: "MetGIS Point API, Package "smart" v 1.0;
  all data correspond to local time",
  Calculated_LocalTime: "2017-10-02T10:37+02:00",
  Calculated_UTC: "2017-10-02T08:37+00:00"
}
- Current: {
  Temperature: 11.2,
  PrecipitationTotal_Intensity: 0,
  WindSpeed: 27,
  Temperature_Unit: "°C",
  SunSet: "2017-10-02T18:31+02:00",
  SunRise: "2017-10-02T06:55+02:00",
  PrecipitationSnow_Intensity: 0,
  Icon: "sunny.png",
  WindDirection: "SE",
  PrecipitationRain_Intensity: 0,
- Forecast_hourly: {
  + ForecastTimes_LocalTime: [...],
  - Temperature: [
    14.8,
    16.2
```

Standard parameters

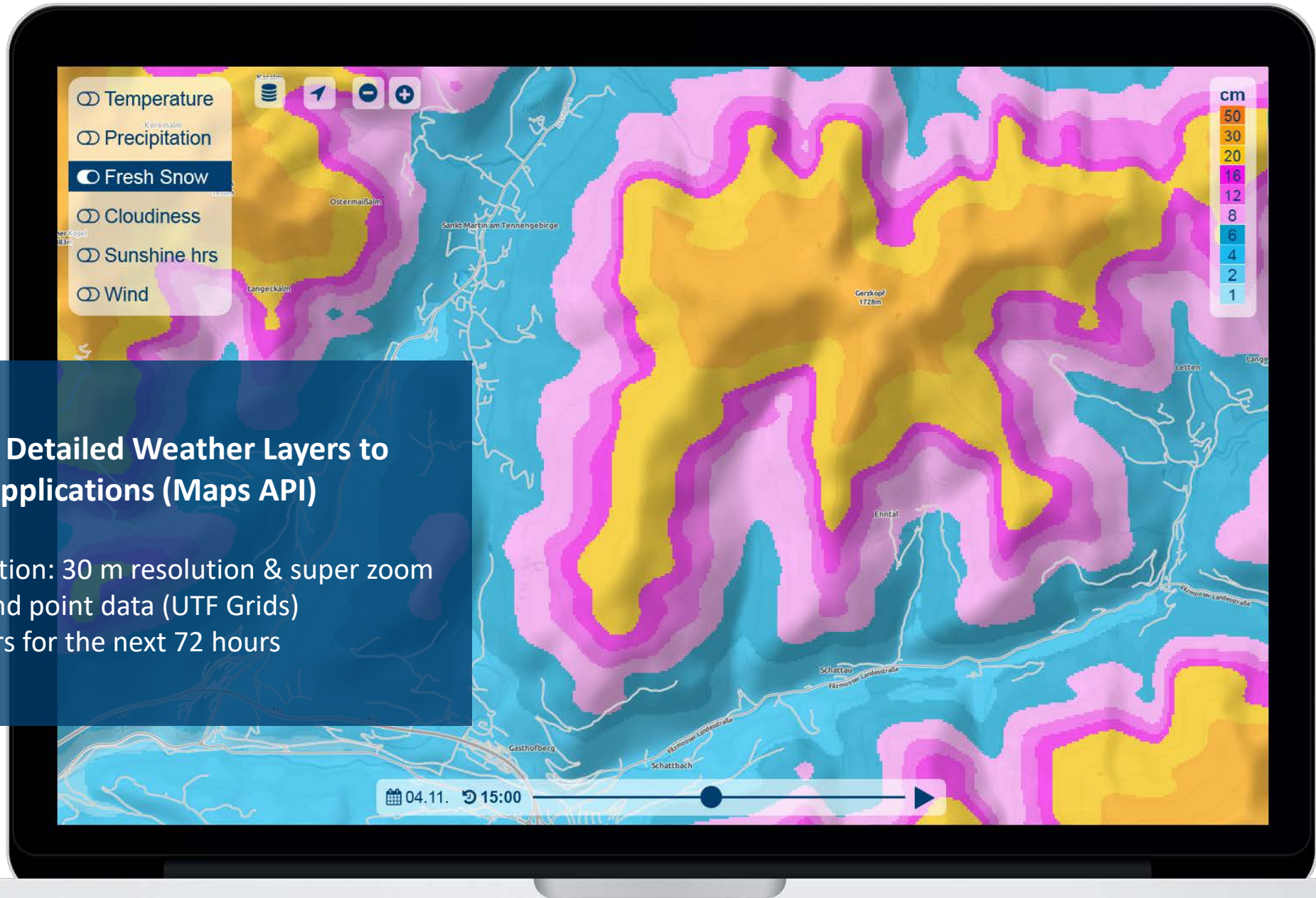
- Air temperature
- Precipitation
- Precipitation probability
- Fresh snow
- Cloudiness
- Wind speed
- Wind direction
- Felt temperature
- Wind chill
- Humidity
- Sunshine duration

Special parameters

- Wet-bulb temperature
- Snow line
- Short-wave radiation
- Long-wave radiation
- Soil temperature
- Soil humidity
- Vertical cloud distribution
- Heat index
- ...

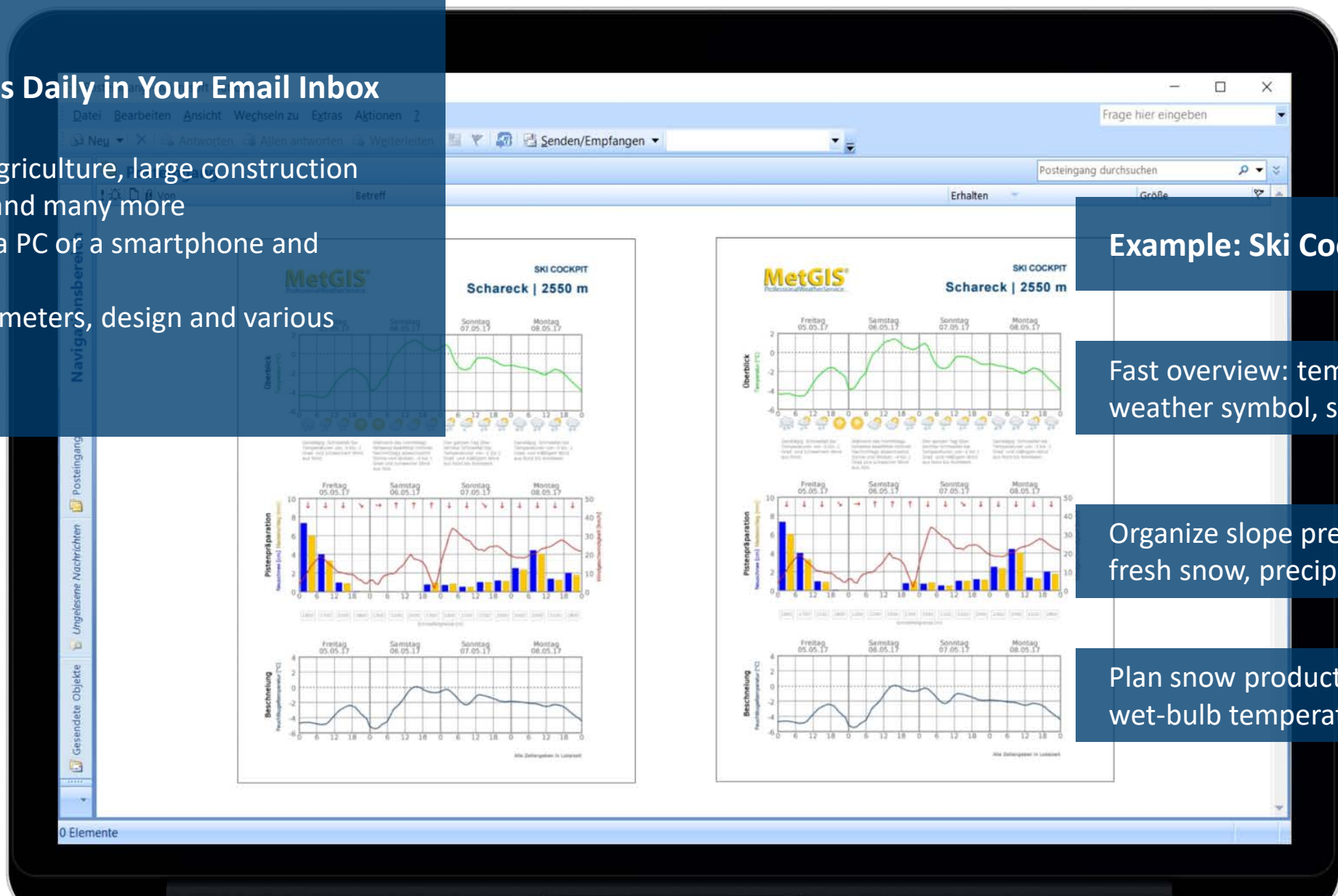
Add Extremely Detailed Weather Layers to Existing Map Applications (Maps API)

- ⊕ World innovation: 30 m resolution & super zoom
- ⊕ Tiles (PNG) and point data (UTF Grids)
- ⊕ Forecast layers for the next 72 hours



Weather Reports Daily in Your Email Inbox

- + Ideal tool for agriculture, large construction sites, tourism and many more
- + To be used on a PC or a smartphone and as a printout
- + Individual parameters, design and various languages



Example: Ski Cockpit

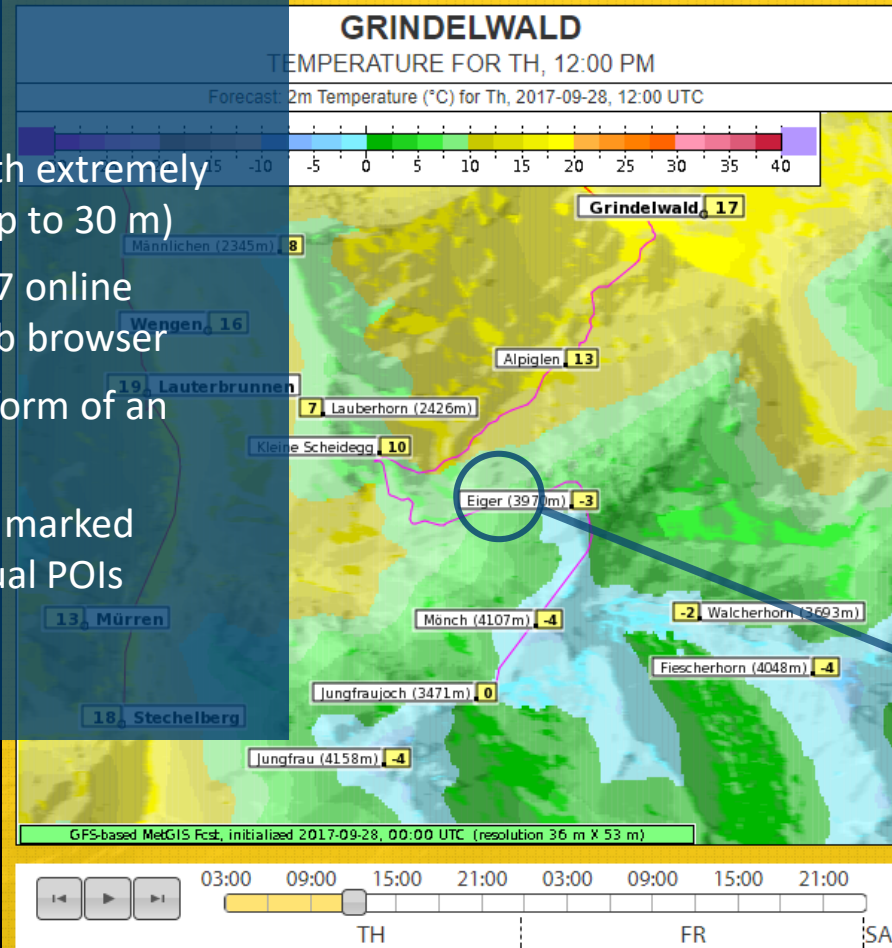
Fast overview: temperature, weather symbol, short text

Organize slope preparation: fresh snow, precipitation, wind

Plan snow production: wet-bulb temperature

Interactive Forecast Maps (MetGIS Pro)

- + Forecast maps with extremely high resolution (up to 30 m)
- + Ready to use: 24/7 online availability via web browser
- + 2-day forecast in form of an animation
- + 7-day forecast for marked locations (individual POIs possible)



SELECT WEATHER MAP

TEMPERATURE

- AREAS
- NUMBERS (IN GRID PATTERN)

PRECIPITATION (3HRS)

FORM OF PRECIPITATION

FRESH SNOW (3HRS)

SNOW LINE

WIND

FELT TEMPERATURE

CLOUDINESS

RISK OF SHOWERS

SELECT THE FORECAST MODEL

GFS | WRF

FORECAST MAPS

Select Area:

POINT FORECASTS

Select Location:

ROUTE FORECASTS

not available

HELP

ANY QUESTIONS:

PRINT CHART:

Example: 7 day forecast for specific locations

MetGIS/GFS Forecast for Eiger (3970 m)
Forecast Initial Time: Th, 2017-09-28, 00:00 UTC

Forecast valid for (hour):	Th												Fr					Sum	
	00	03	06	09	12	15	18	21	00	03	06	09	12	15	18	21	Th-Fr	Sa-We	
Temperature [°C]	-4	-4	-3	-3	-3	-3	-3	-3	-3	-3	-3	-3	-3	-3	-3	-3	-	-	
Precipitation (3hrs) [mm]	-	0	0	0	0	<1	<1	<1	<1	<1	<1	<1	<1	<1	<1	0	2	64	
Fresh Snow (3hrs) [cm]	-	0	0	0	0	0	0	<1	<1	<1	<1	<1	<1	<1	<1	0	2	75	
Snow Line [m]	2600	2400	2400	2700	2900	3000	2600	2800	2700	2500	2400	2800	3100	3200	3100	2600	-	-	
Wind [m/s]	W 4	NW 4	NW 4	NW 3	W 3	W 3	NW 4	NW 3	NW 3	NW 3	NW 4	NW 4	NW 3	NW 3	NW 3	NW 3	-	-	

Forecast valid for (hour):	Sa			Su			Mo			Tu			We			
	00	06	12	18	00	06	12	18	00	06	12	18	00	06	12	18
Temperature [°C]	-3	-3	-4	-4	-4	-4	-4	-4	-3	-3	-2	-2	-4	-4	-6	-6
Precipitation (3hrs) [mm]	0	0	<1	12	9	<1	<1	<1	5	9	6	2	<1	13	5	<1
Fresh Snow (3hrs) [cm]	0	0	<1	15	11	1	<1	<1	6	11	7	2	<1	15	6	<1
Snow Line [m]	2500	2400	3100	3000	2700	2500	2800	2800	2800	3100	3200	3200	3000	2900	2600	2200
Wind [m/s]	NW 3	NW 3	SW 3	W 4	W 4	W 3	W 4	W 5	W 7	NW 5	W 6	W 8	W 9	W 10	W 9	NW 11

You are using MetGIS

Historic Weather Data

- Reconstruction of past weather data with special MetGIS procedures
 - Especially for mountainous and remote regions with no/few weather stations
 - Back as far as the year 1950 (depending on requirements and methods)
- Parameters: precipitation, temperature, wind and many more
- Temporal resolution: hourly, 3-hourly or daily values
- For any desired coordinates and areas (catchment areas!) worldwide



These Organizations Already Trust in MetGIS (Excerpt):

The logo for wetter.com, featuring the text "wetter.com" in a bold, blue, sans-serif font inside a yellow rounded rectangle.

Europe's leading weather portal (Germany)

The logo for outdooractive, featuring the text "outdooractive" in a green, lowercase, sans-serif font.

Europe's leading platform for outdoor enthusiasts (Germany)

The logo for SKIDATA, featuring the text "SKIDATA" in a bold, grey, uppercase, sans-serif font with a registered trademark symbol.

Ticketing and access solutions (Austria)

The logo for ICGC, featuring a yellow square with a white wave-like shape and the text "ICGC Institut Cartogràfic i Geològic de Catalunya" in a black, sans-serif font.The logo for the Snow and Avalanche Study Establishment, featuring the text "Snow and Avalanche Study Establishment" in a black, sans-serif font inside a grey, textured rectangular box.

Avalanche warning services from Spain to India

The logo for Colbun, featuring a stylized "C" made of three curved lines in blue, green, and yellow, followed by the text "Colbun" in a bold, grey, sans-serif font and "MEJOR ENERGÍA" in a smaller, grey, sans-serif font below it.

Energy providers (especially hydropower)

The logo for BARRICK, featuring a stylized gold "B" icon above the text "BARRICK" in a bold, blue, uppercase, sans-serif font.The logo for AngloAmerican, featuring a stylized blue and red "A" icon above the text "AngloAmerican" in a bold, blue, sans-serif font.

Leading open-pit mining corporations (Latin America)

The logo for the Ministerio de Obras Públicas, featuring a blue square with a white coat of arms and a red square with the text "Ministerio de Obras Públicas" in a white, sans-serif font.The logo for ASFINAG, featuring a stylized "A" icon followed by the text "ASFINAG" in a bold, black, uppercase, sans-serif font.

Road operators from Austria to Chile

And many more satisfied customers: from various startups and apps to the King of Bhutan

Get in Touch With Us!



MetGIS GmbH

📍 Lange Gasse 16/18
1080 Vienna, Austria

☎ +43 / 1 / 890 90 32

🌐 www.metgis.com



Dr. Gerald Spreitzhofer
CEO

gerald.spreitzhofer@metgis.com